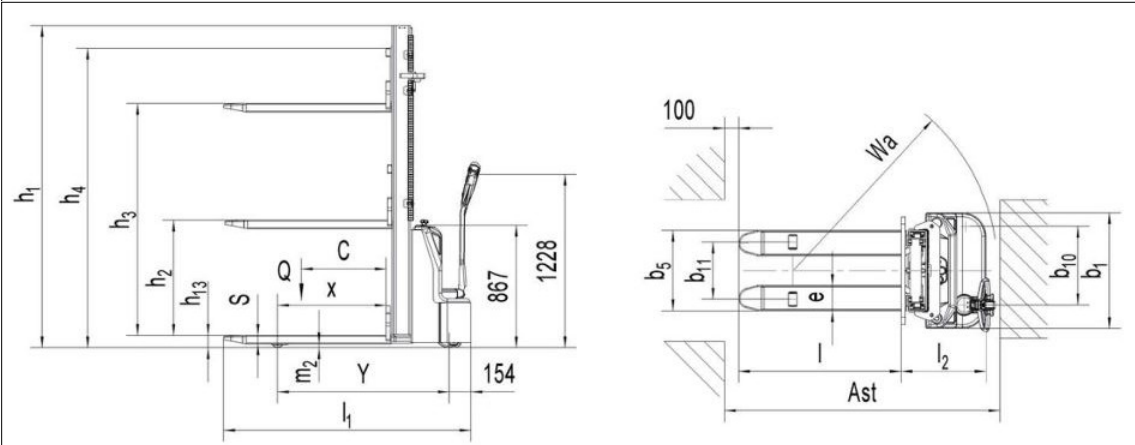
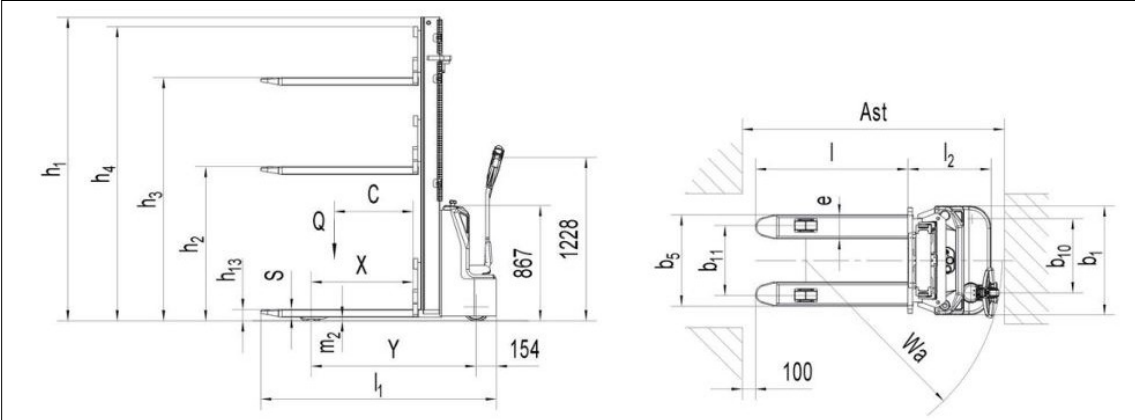


# PSE10L-C




# PSE15L-C



PSE10L-C/PSE15L-C WALKIE ELECTRIC STACKER							
DISTINGUISHING MARK	1.2	Manufacturer's type designation	PSL Model(PSE10L-C)		PSL Model(PSE15L-C)		
			1600	3500	1600 3600		
	1.3	Drive	Battery		Battery		
	1.4	Operator type	Pedestrian		Pedestrian		
	1.5	Load Capacity / rated load	1.0		1.5		
	1.6	Load centre distance	600		600		
	1.8	Load distance centre of drive axle to fork	x(mm)		770		
	1.9	Wheelbase	Y(mm)		1220 1245		
WEIGHT	2.1	Service weight	kg	450 570	500 750		
	2.2	Axle loading laden front/rear	kg	490/960 540/1030	640/1450 690/1560		
	2.3	Axle loading unladen front/rear	kg	330/120 415/155	410/180 525/225		
TYERS, CHASSIS	3.1	Tires	Polyurethane (PU)		Polyurethane (PU)		
	3.2	Tire size front	w (mm)	Ø210×70	Ø210×70		
	3.3	Tire size rear	w (mm)	Ø80×70	Ø80×70		
	3.4	Additional wheels(dimensions)	w (mm)	Ø100×50	Ø100×50		
	3.5	Wheels number front/rear(x=driven wheels)		1x+1/2	1x+1/2		
	3.6	Tread front	b10 (mm)	557	557		
	3.7	Tread rear	b11 (mm)	410/525	410/525		
DIMENSIONS	4.2	Lowered max height	h1 (mm)	2057	2282	1980	2282
	4.3	Free Lift height	h2 (mm)	1513	-	1508	78
	4.4	Lift height	h3 (mm)	1513	3413	1513	3513
	4.5	Extended maximal height	h4 (mm)	2057	3989	1985	4039
	4.9	Height of tiller in drive position min./max.	h14 (mm)	670/1228		670/1228	
	4.15	Height lowered	h13 (mm)	87		87	
	4.19	Overall length	l1 (mm)	1750		1779	
	4.20	Length to face of forks	l2 (mm)	600		629	
	4.21	Overall width	b1 (mm)	820		820	
	4.22	Fork dimensions	s/t1 (mm)	60/180/1150		60/180/1150	
	4.25	Width across forks	b5 (mm)	570/685		570/685	
	4.32	Ground clearance centre of wheelbase min/max	m2 (mm)	32		27	
4.33	Aisle width for pallets 1000X1200 crossways	Ast (mm)	2293		2324		
4.34	Aisle width for pallets 800X1200 lengthways	Ast (mm)	2238		2269		
4.35	Turning radius	Wa (mm)	1450		1481		
PERFORMANCE DATA	5.1	Travel speed laden/ unladen	km/h	4.0/4.3	4.0/4.4		
	5.2	Lift speed laden/ unladen	m/s	0.119/0.195	0.087/0.148		
	5.3	Lowering speed laden/unladen	m/s	0.166/0.159	0.125/0.117		
	5.8	Max gradeability laden/ unladen	%	5/10		5/10	
ELECTRIC MOTOR	5.10	Service brake	Electromagnetic		Electromagnetic		
	6.1	Drive motor rating 52 60min	kW	2.2	2.2		
	6.2	Lift motor rating at 53 7.5%	kW	2.2	2.2		
	6.3	Battery acc to DIN 43531/35/36 A B C no		No	No		
	6.4	Battery voltage nominal capacity K5	V/Ah	2x12/80	2x12/100		
	6.5	Battery weight	kg	2x26	2x34		
6.6	Energy consumption acc to VDI cycle	kWh/h	0.44	0.68			
ADDITIONAL DATA	8.1	Type of drive control	DC Speed Control		DC Speed Control		
	8.4	Sound level at driver's ear acc to EN 12053	db(A)	<70	<70		

All dimensions are in mm.

REV. NO.	DATE	DESCRIPTION OF REVISION	DRAWN	CHECKED	APPROVED
<p>DISCLAIMER: THIS DRAWING IS A PROPERTY OF E.G. KANTAWALLA PVT.LTD. MODIFICATION OR REPLICATION WITHOUT CONSENT IS AN OFFENCE. THE DRAWING IS SUBJECTED TO CHANGE WITHOUT ANY PRIOR NOTICE.</p>					
REFERENCE DRAWING		<p><b>ACCURATE MEEZAN TRADING LLC</b> </p> <p>PO BOX ,40646,OFFICE#1909,19th FLOOR, CHURCHILL TOWER 1-COMMERCIAL, BUSINESS BAY, DUBAI-U.A.E</p>			
		TITLE	PSE10-15-L-C		
		DWG. NO.	AMT-05		
DRAWN BY	PNS	03/04/26	WEIGHT (Kg)	FORMAT	SCALE
CHKD. BY	SHW	03/04/26	2.1	A4	NTS
APPR. BY	SHW	03/04/26			SHEET NO. 1 of 1
					REV. 00