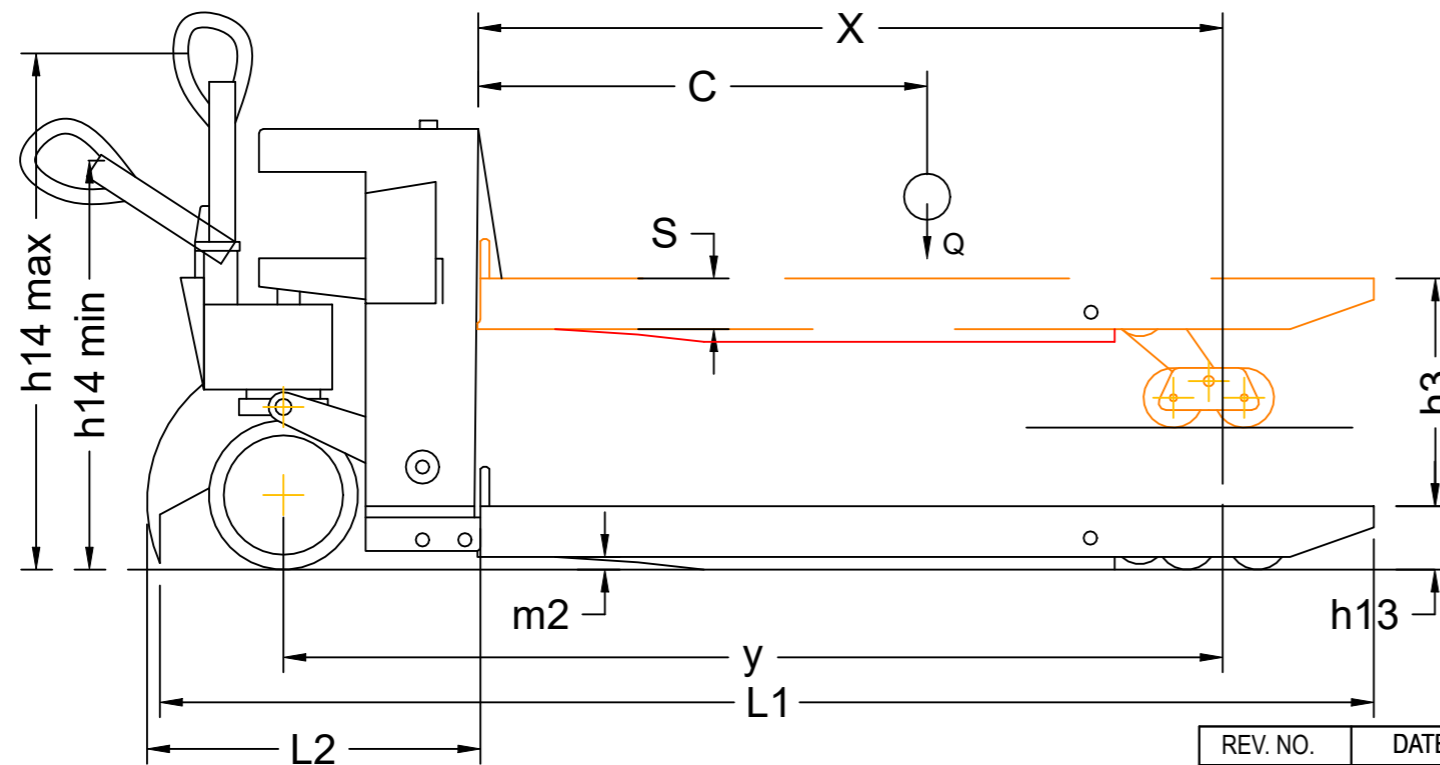


TOP VIEW



SIDE VIEW

MODEL	PPT20H	EPT15H	EPT20H	EPT15H-65L
<b>CHARACTERISTICS</b>				
1.1 Drive	Electric	Electric	Electric	Electric
1.2 Operator type	Pedestrian	Pedestrian	Pedestrian	Pedestrian
1.3 Load capacity/rated load	Q kg 2000	1500	2000	1500
1.4 Load centre	C mm 600	600	600	600
1.5 Height, fork lowered	h <sub>13</sub> mm 82 ± 2	82 ± 2	82 ± 2	65 ± 2
1.6 Wheelbase	y mm 1197/1267	1197/1267	1197/1267	1197/1267
1.7 Wheel	PU	PU	PU	PU
1.8 Wheel size, front	mm 140*55	140*55	140*55	140*55
1.9 Wheel size, rear	mm 80*70 (Single Wheel) 80*70 (Tandem)	80*93 (Single Wheel) 80*70 (Tandem)	80*93 (Single Wheel) 80*70 (Tandem)	60*93 (Single Wheel) 60*70 (Tandem)
1.10 Wheels, number front/rear (x = drive wheels)	1x+2/4	1x+2/4	1x+2/4	1x+2/4
1.11 Lift	h <sub>3</sub> mm 115	115	115	100
1.12 Height of tiller in drive position, min./max.	h <sub>14</sub> mm 740/1220	740/1220	740/1220	740/1220
1.13 Overall length	L <sub>1</sub> mm 1552/1622	1552/1622	1552/1622	1566/1636
1.14 Fork Length	L mm 1150/1220	1150/1220	1150/1220	1150/1220
1.15 Overall width	b <sub>1</sub> mm 550/685	550/685	550/685	550/685
1.16 Fork dimensions	mm 58/160/1150(1220)	58/160/1150(1220)	58/160/1150(1220)	45/160/1150(1220)
1.17 Distance between fork-arms	b <sub>5</sub> mm 550/685	550/685	550/685	550/685
1.18 Ground clearance, centre of wheelbase	m <sub>2</sub> mm 22/137(24/139)	22/137(24/139)	22/137(24/139)	16.5/116.5(17.2/117.2)
1.19 Aisle width for pallets 1000x1200 crossways	A <sub>at</sub> mm 2155/2226	2155/2226	2155/2226	2155/2226
1.20 Aisle width for pallets 800x1200 lengthways	A <sub>al</sub> mm 2024/2064	2024/2064	2024/2064	2024/2064
1.21 Turning radius	W <sub>a</sub> mm 1353/1426	1353/1426	1353/1426	1353/1426

All dimensions are in mm.

REV. NO.	DATE	DESCRIPTION OF REVISION	DRAWN	CHECKED	APPROVED			
DISCLAIMER: THIS DRAWING IS A PROPERTY OF E.G. KANTAWALLA PVT.LTD. MODIFICATION OR REPLICATION WITHOUT CONSENT IS AN OFFENCE. THE DRAWING IS SUBJECT TO CHANGE WITHOUT ANY PRIOR NOTICE.								
REFERENCE DRAWING		<b>ACCURATE MEEZAN TRADING LLC</b>						
		PO BOX ,40646,OFFICE#1909,19th FLOOR, CHURCHILL TOWER 1-COMMERCIAL, BUSINESS BAY, DUBAI-U.A.E						
		TITLE	EPT15H/20H/15H-65L/PPT20H					
		DWG. NO.	AMT-06					
DRAWN BY	PNS	06/03/26		WEIGHT (Kg)	FORMAT	SCALE	SHEET NO.	REV.
CHKD. BY	SHW	06/03/26		2.1	A4	NTS	1 of 1	00
APPR. BY	SHW	06/03/26						

5

6

7

8