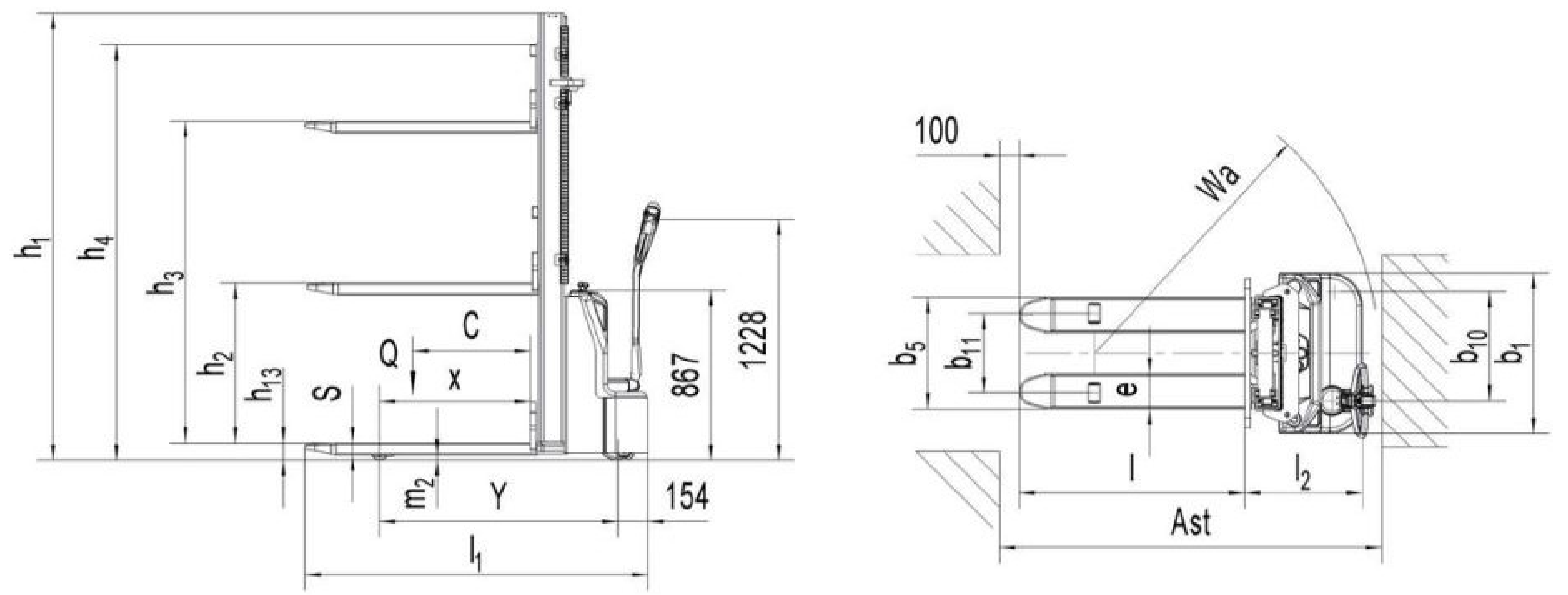
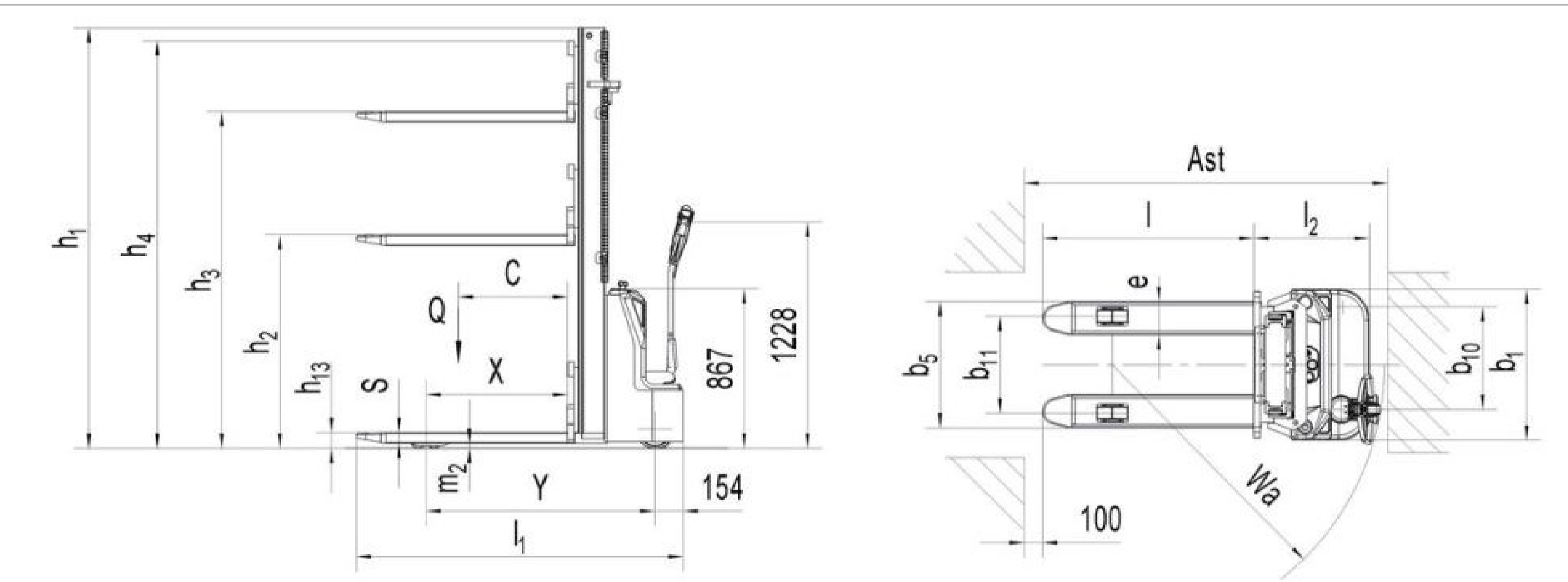


# PSE10L-C



# PSE15L-C



PSE10L-C/PSE15L-C WALKIE ELECTRIC STACKER						
DISTINGUISHING MARK	1.2	Manufacturer's type designation	PSL Model(PSE10L-C)		PSL Model(PSE15L-C)	
			1600	3500	1600	3600
WEIGHT	1.3	Drive	Battery		Battery	
	1.4	Operator type	Pedestrian		Pedestrian	
	1.5	Load Capacity / rated load	1.0		1.5	
	1.6	Load centre distance	600		600	
TYERS, CHASSIS	1.8	Load distance centre of drive axle to fork	769		770	
	1.9	Wheelbase	1215		1220	
	2.1	Service weight	450	570	590	750
	2.2	Axle loading laden front/rear	490/960	540/1030	640/1450	690/1560
DIMENSIONS	2.3	Axle loading unladen front/rear	330/120	415/155	410/180	525/225
	3.1	Tires	Polyurethane (PU)		Polyurethane (PU)	
	3.2	Tire size front	Ø210×70		Ø210×70	
	3.3	Tire size rear	Ø80×70		Ø80×70	
	3.4	Additional wheels(dimensions)	Ø100×50		Ø100×50	
	3.5	Wheels number front/rear(x=driven wheels)	1x+1/2		1x+1/2	
	3.6	Tread front	b10 (mm)		557	
	3.7	Tread rear	b11 (mm)		410/525	
	4.2	Lowered max height	2057	2282	1980	2282
	4.3	Free Lift height	1513	-	1508	78
PERFORMANCE DATA	4.4	Lift height	1513	3413	1513	3513
	4.5	Extended maximal height	2057	3989	1985	4039
	4.9	Height of tiller in drive position min./max.	670/1228		670/1228	
	4.15	Height lowered	h13 (mm)		87	
	4.19	Overall length	l1 (mm)		1750	
	4.20	Length to face of forks	l2 (mm)		600	
	4.21	Overall width	b1 (mm)		820	
	4.22	Fork dimensions	s/e/l (mm)		60/180/1150	
	4.25	Width across forks	b5 (mm)		570/685	
	4.32	Ground clearance centre of wheelbase min/max	m2 (mm)		32	
ELECTRIC MOTOR	4.33	Aisle width for pallets 1000X1200 crossways	Ast (mm)		2293	
	4.34	Aisle width for pallets 800X1200 lengthways	Ast (mm)		2238	
	4.35	Turning radius	Wa (mm)		1450	
	5.1	Travel speed laden/ unladen	km/h		4.0/4.3	
	5.2	Lift speed laden/ unladen	m/s		0.119/0.195	
	5.3	Lowering speed laden/unladen	m/s		0.125/0.117	
	5.8	Max gradeability laden/ unladen	%		5/10	
	5.10	Service brake	Electromagnetic		Electromagnetic	
	6.1	Drive motor rating S2 60min	kW		0.75	
	6.2	Lift motor rating at S3 7.5%	kW		2.2	
ADDITIONAL DATA	6.3	Battery acc to DIN 43531/35/36 A B C no	No		No	
	6.4	Battery voltage nominal capacity K5	V/Ah		2x12/80	
	6.5	Battery weight	kg		2x26	
	6.6	Energy consumption acc to VDI cycle	kWh/h		0.44	
8.1	Type of drive control	DC Speed Control		DC Speed Control		
8.4	Sound level at driver's ear acc to EN 12053	db(A)		<70		

All dimensions are in mm.

REV. NO.	DATE	DESCRIPTION OF REVISION	DRAWN	CHECKED	APPROVED
----------	------	-------------------------	-------	---------	----------

DISCLAIMER: THIS DRAWING IS A PROPERTY OF E.G. KANTAWALLA PVT.LTD. MODIFICATION OR REPLICATION WITHOUT CONSENT IS AN OFFENCE. THE DRAWING IS SUBJECT TO CHANGE WITHOUT ANY PRIOR NOTICE.

**ACCURATE MEEZAN TRADING LLC** 

PO BOX ,40646,OFFICE#1909,19th FLOOR,  
CHURCHILL TOWER 1-COMMERCIAL,  
BUSINESS BAY,  
DUBAI-U.A.E

REFERENCE DRAWING	NAME	DATE
DRAWN BY	PNS	03/04/26
CHKD. BY	SHW	03/04/26
APPR. BY	SHW	03/04/26

TITLE	DWG. NO.	WEIGHT (Kg)	FORMAT	SCALE	SHEET NO.	REV.
PSE10-15-L-C	AMT-05	2.1	A4	NTS	1 of 1	00