

PSE12B SL /12N SL

The EDGE Smart Design Pallet Stackers



PSE12B SL **AGM**

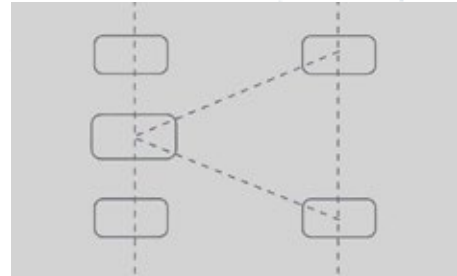
- 2600lbs/1200kg Capacity
- Perfect for light-duty applications.
- Compact & light service weight
- High maneuverability
- Maintenance-free Lead-acid Battery
- Integrated on-board 12A charger
- Ideal for use on mezzanines

PSE12N SL **Li-ion**

- 2600lbs/1200kg Capacity
- Perfect for light-duty applications.
- Compact & light service weight
- High maneuverability
- Fast-charging Li-ion batteries.
- Integrated on-board 25A charger
- Ideal for use on mezzanines
- Ultimate solution for light duty operations

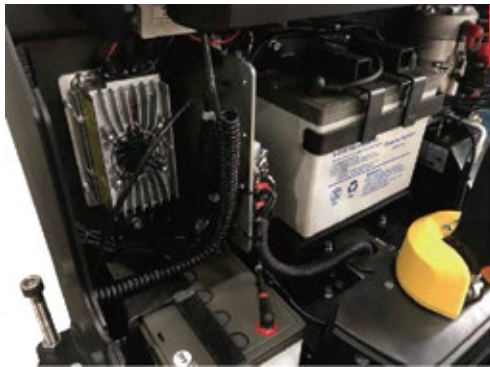


Great stability and safety with its 3-point structure design



Chassis with 3+2-point structure: lx+2/2

- The drive wheel located in the middle for better traction and stability of the stacker.
- The support wheels with suspension are located from left and right sides and provide better lateral stability to the truck.
- support straddle legs are equipped with single



Maintenance Friendly

Convenient and fast access to any component of the truck, no elements are located in areas difficult to reach. No Special tools are required .

Support legs are made out of solid steel (not tube) to have enough rigidity to ensure the stability and safety. The width of each leg is consistent which prevents possible hooking of pallets and racks when driving out from the racking system.



The operator can always clearly see the forks which significantly increases safety of operation.

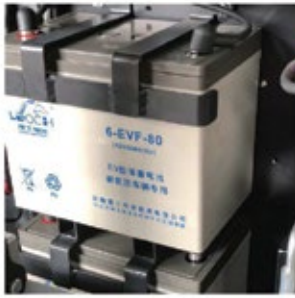
Robustness and Perfect Observation



Adjustment of support legs and forks



The support legs are fixed with screws located outside of the truck's body (4 screws for each side). The position can be easily adjusted according to the customer's needs to achieve the overall width of the truck:



PSExxB SL
2x12 85Ah (5Hr) AGM maintenance free batteries are used. Optionally available 2x12 106Ah (5Hr).



For PSExxB SL the charger with current 12A is used. The standard charging time is 7 hours.



PSExxN SL
24V 60Ah Lithium LiFePO4 battery with BMS. Lithium battery has connection terminals with screws and located inside the steel case.



For PSExxN SL the charger with current 25A is used. The standard charging time is 2.5 hours. Opportunity charging is supported.

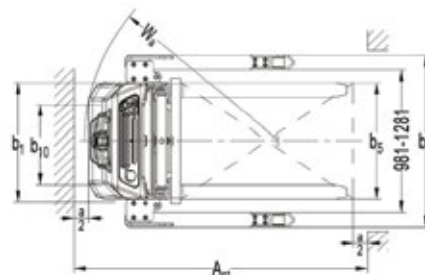
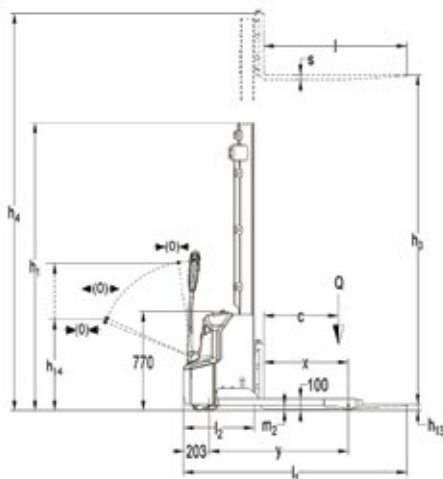
The **PSExxN SL** stacker is equipped with maintenance-free 24V/60Ah LiFePO4 type Li-ion battery with fast charging and ultra-high number of charging /discharging cycles during life time; opportunity charging feature basically does not limit your operation time. The integrated BMS provides the same features as the BMS for the batteries of pallet trucks (refer to pallet truck section). The on-board charger with 25A current can provide full charge for less than 2.5 hours with great efficiency.

The **PSExxB SL** stacker is equipped with 2x12V 85Ah VRLA-AGM maintenance free batteries. Optionally available 2x12V 106Ah batteries for longer operation. The stacker is equipped with 12A on-board charger. The charging time is 7-8 hours, opportunity charging is not available.



Mast table PS E12BSI/PS E12NSI

Specification	Lowered mast height	Free lift height	Lift height	Extended mast height	Lift+fork height
	h1(mm)	h2 (mm)	h3 (mm)	h4 (mm)	h3 + h13 (mm)
Mono-mast	1940	1514	1514	2100	1600
	2340	1914	1914	2500	2000
Two stage mast	1790	-	2514	3100	2600
	1940	-	2814	3400	2900
	2090	-	3114	3700	3200
	2290	-	3514	4100	3600



Type sheet for industrial truck acc. to VOi 2198 1KG=2.2Le 11NcH=25.4MM

	1.2 Manufacturer's type designation		PS E 12BSL	PS E12NSL
Distinguishing mark	1.3 Power (battery diesel petrol gas manual)		3600	
	1.4 Operator type		Battery	
	1.5 Load Capacity / rated load	Q(t)	Pedestrian	
	1.6 Load centre distance	c (mm)	1.2	
	1.8 Load distance centre of drive axle to fork	x (mm)	600	
	1.9 Wheelbase	y (mm)	674	
				1111
Weight	2.1 Service weight	kg	830	830
	2.2 Axle loading laden front/rear	kg	730/1300	730/1300
	2.3 Axle loading unladen front/rear	kg	620/210	620/210
Tires chassis	3.1 Tires		Polyurethane	
	3.2 Tire size front	xw(mm)	210x70	
	3.3 Tire size rear	xw(mm)	84 x 93	
	3.4 Additional wheels(dimensions)	xw(mm)	100x40	
	3.5 Wheels number front/rear(driven wheels)		1x+2/2	
	3.6 Tread front	b10 (mm)	520	
	4.2 Lowered mast height	h1 (mm)	2290	
	4.3 Free Lift height	h2 (mm)	-	
	4.4 Lift height	h3 (mm)	3514	
	4.5 Extended mast height	h4 (mm)	4100	
	4.9 Height of tiller in drive positionmin/max	h14 (mm)	710/1150	
	4.15 Height lowered	h13(mm)	50	
4.19 Overall length	l1 (mm)	1790		
Dimensions	4.20 Length to face of forks	l2 (mm)	640	
	4.21 Overall width	b1 (mm)	800/(1181/1281/1381/1481)	
	4.22 Fork dimensions	s/e/l (mm)	40/100/1150	
	4.25 Distance between forks-arms	b5 (mm)	252-800	
	4.32 Ground clearance centre of wheelbase	m2 (mm)	40	
	4.33 Aisle width for pallets 1000X1200 crossways	Ast (mm)	2228	
	4.34 Aisle width for pallets 800X1200 lengthways	Ast (mm)	2206	
	4.35 Turning radius	Wa (mm)	1345	
Performance data	5.1 Travel speed laden/unladen	km/h	4.2/4.5	
	5.2 Lift speed laden/unladen	m/s	0.11/0.16	
	5.3 Lowering speed laden/unladen	m/s	0.13/0.11	
	5.8 Max gradeability laden/unladen	%	4/10	
	5.10 Service brake		Electromagnetic	
	6.1 Drive motor rating S2 60min	kW	0.65	
6.2 Lift motor rating at S3 4.5%	kW	2.2		
Electric engine	6.3 Battery acc to DIN 43531/35/36 A, B, C no		No	
	6.4 Battery voltage nominal capacity K5	V/Ah	2x12/85	24/60
	6.5 Battery weight +/-5%	kg	2x27	19
	6.6 Energy consumption acc to VDI cycle	kWh/h	0.6	
Additional data	8.1 Type of drive control		DC	
	8.4 Sound level at driver's ear acc to EN 12053	dB(A)	<70	
	1) Option 2x12V105Ah 2) 2x12V105Ah 2 x 34kg			

Marketed by:

Accurate Meezan Trading LLC

P.O.Box: 40646, Office # 1909, 19th Floor,
Churchill Tower 1 - Commercial, Business Bay, Dubai - U.A.E
Tel.: +971 4 3337789 / +971 4 3337790 Fax: +971 4 3336210
Email: info.amt@egkantawalla.com



Name & Address of Dealer: